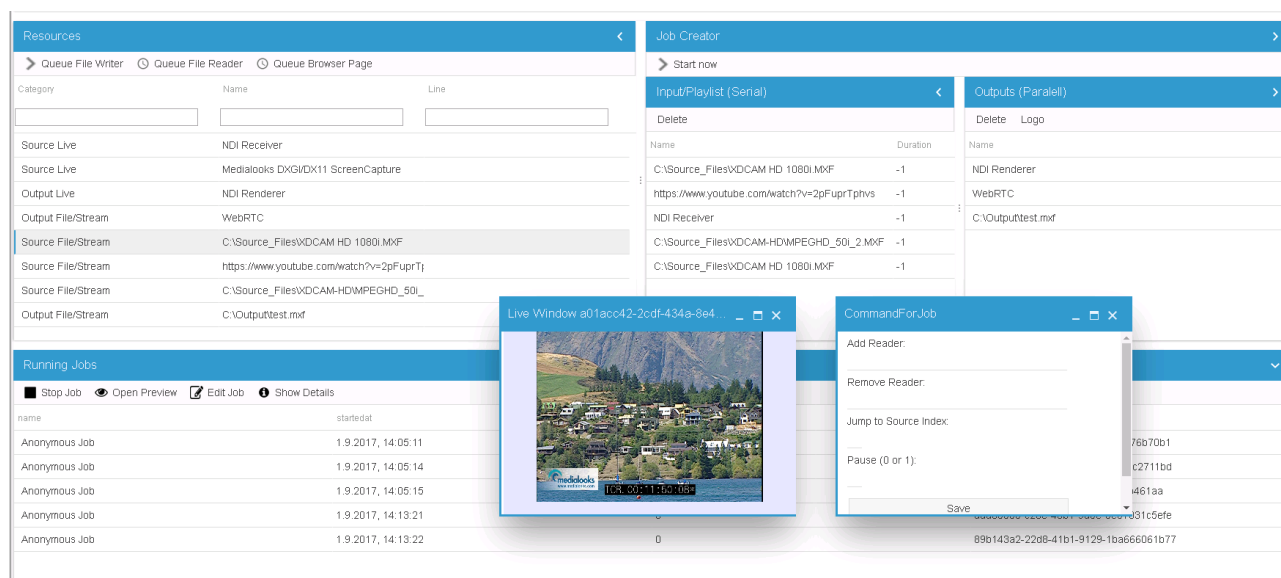


SERVUS Node

Ingest and Playout Server

What it is

SERVUS – (latin “Slave”) is a software-only videosever that supports a very wide range of IO-Devices as well as IP Stream and File formats as inputs and outputs. It combines the functionality from traditionally distinct products such as Decoder, Recorder, Transcoder, Playout server, Graphics server, Encoder within one engine. Due to its nature it can be deployed on premise, in a remote datacenter or at a public cloud. Therefore it addresses traditional as well as most modern business cases.



SERVUS Administration GUI

Supported **inputs** and **outputs** are:

- **Devices**
 - IO Cards: Blackmagic Design, AJA, BlueFish444, Stream Labs, DELTACAST, Magewell and DekTec
 - NDI (Network Device Interface developed by Newtek – SDI over IP) Sender and Receiver
- **File/Stream Formats**
 - Mostly any known Container and Codec Format (Video and Audio as well as Image) is supported for decoding and encoding.
 - Streaming protocols like http/https, udp, rtsp, rtmp are supported as input and output.
 - Special support for youtube URL's: When a link to youtube is provided as source, the highest quality of the main video is automatically parsed from youtube.

Various **video processing** functions are provided:

- Logo insertion
- Lower thirds, e.g. crawls, animations, graphics (future release)
- Video up/down scaling, deinterlacing, standard conversion
- Conversion between any supported input and any output format

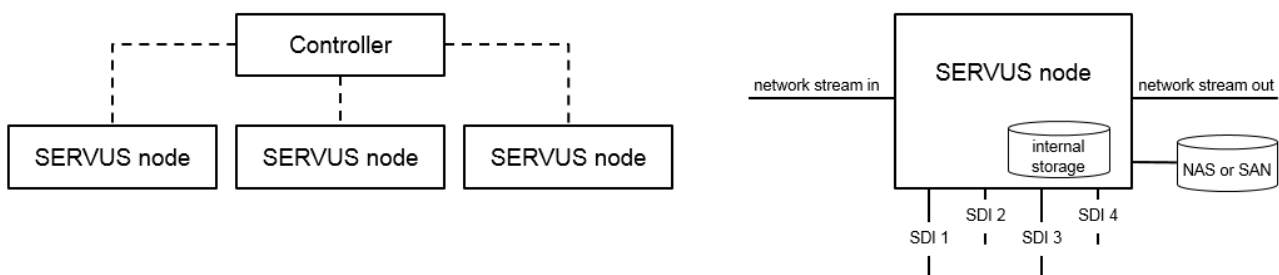
What to use it for

Due to its flexibility SERVUS addresses many traditional and most modern use cases. Every user may have his own ideas and use cases. Some of the obvious and tested use cases are:

- Live feed recording
- Live stream recording
- Tape ingest
- Studio playout
- Studio play-in
- Program playout
- Stream playout
- Graphic overlaying
- Format conversion
- Stream switching

Architecture

SERVUS is designed to be part of a larger ecosystem where a governing external Controller sends remote control commands to its API. Each SERVUS Node can make use of multiple inputs and outputs.



Specifications

SERVUS Node runs on Windows 7, 8.1, 10 and 2008, 2012, 2016. It consists from a Windows service and a HTML 5 user interface. A webserver or any other service is not necessary to operate, control or monitor it. Hardware, Storage and Network requirements do directly depend on the number of concurrent jobs and processing complexity. Please make contact for hardware sizing support.

x-dream-media GmbH

Höhenkirchener Straße 134
85662 Hohenbrunn
Germany

Phone +49-8102-99578-1

Fax +49-8102-99578-5

Web www.x-dream-media.com